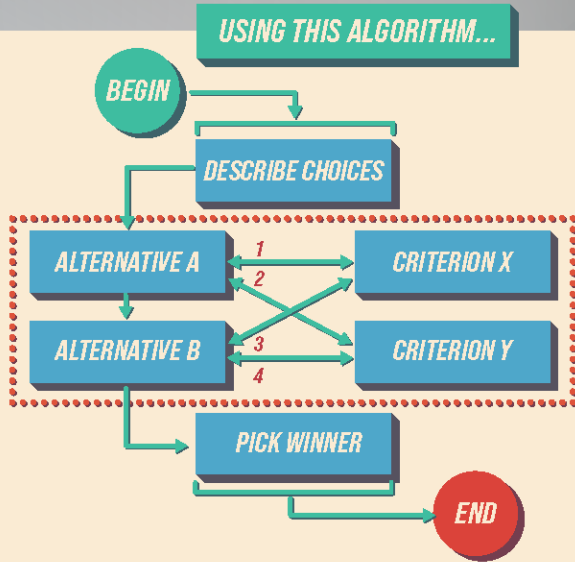


# DOCUMENT ALGORITHMS

COVERED in CHAPTERS  
**14 - 21**

## USE ALGORITHMS TO DEFINE DOCUMENT STRUCTURES

- ▶ Like an *algorithmic flowchart*, a document algorithm can be used by an engineering writer to structure the logical development of an engineering document written in sentences and paragraphs.
- ▶ Although writing a document will require effort, the algorithm will ease the writing process because it is guided by a *straightforward plan*.



## ...WRITE THIS TEXT STREAM

Given the two available thicknesses of tempered glass for our deep-sea submarine's observation window, the first alternative, at 4 cm thick, satisfies both the pressure-stress criterion and strain-flex criterion with design margins of 2 and 2.3, respectively.

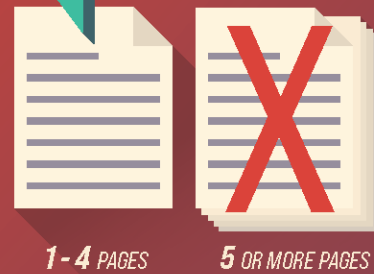
The second alternative, at 3 cm thick, satisfies the stress criterion with a margin of 1.1 and fails to meet our minimum specification for flex. Considering the preceding results, I recommend the 4 cm thick glass.

## DOCUMENT GEOMETRY

Refers to document design elements:  
The placement and arrangement of text and graphics on the page.



## SHORT-FORM DOCUMENTS ARE GENERALLY PREFERRED



# 5

## ESSENTIAL ENGINEERING DOCUMENTS

### 1 PROJECT PROPOSAL

A front-end document for soliciting funding and authorization.

### 2 STATUS REPORT

An interim document that reports status of a project in progress.

### 3 PROJECT REPORT

A back-end document presenting project results and the associated activities that produced those results.

### 4 TECH TO NON-TECH BRIEF

A "how it works" document that explains a technical concept to a nontechnical audience.

### 5 INSTRUCTIONAL JOB AID

A "how to do it" document that teaches a technical job task to someone who needs step-by-step procedures for correctly performing that task.

